

MONTHLY MEMBERSHIP PROGRESS REPORT

District 5M 6

Results as of: 6/30/2024

GMT:

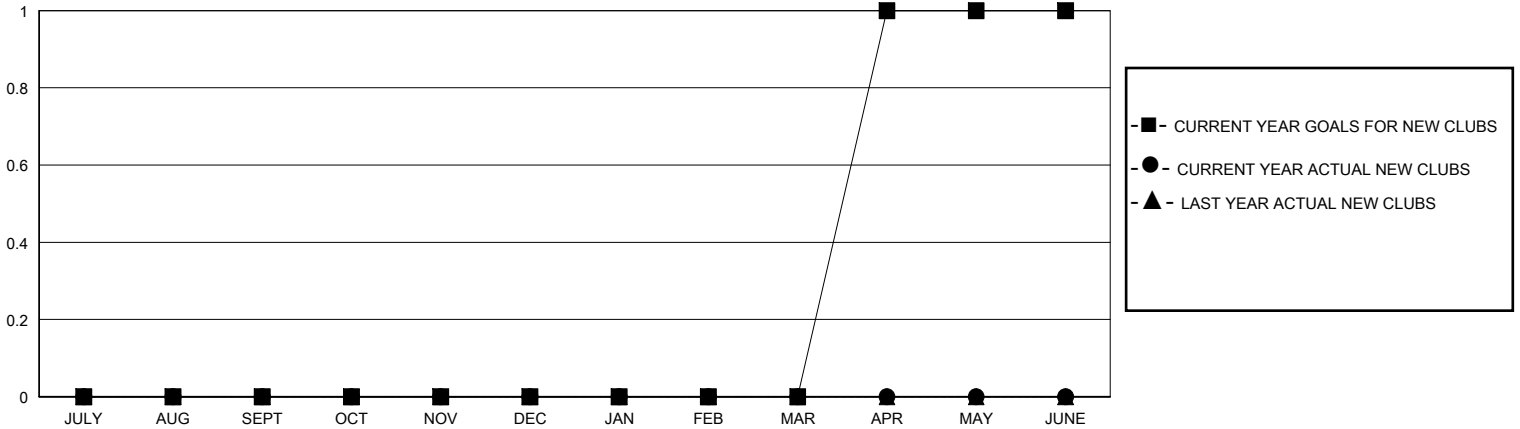
LOCATION MINNESOTA

GMT CA

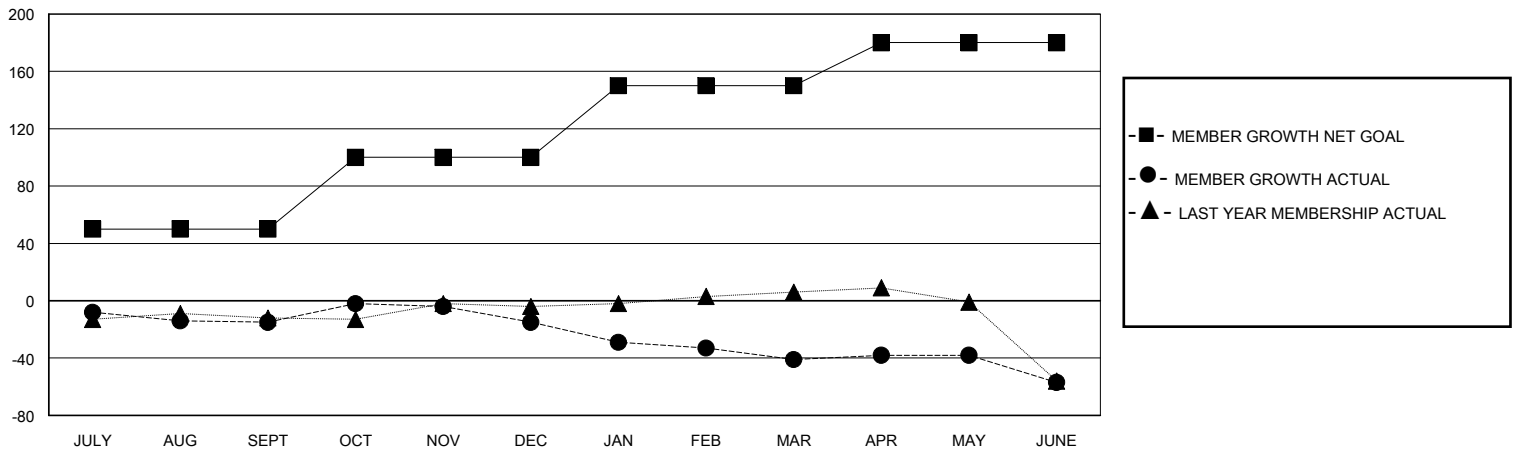
Clubs			
RESULTS FOR 2023-2024			
QUARTER	NEW CLUB GOAL	NEW CLUBS	DROPPED CLUBS
JULY/AUG/SEPT	0	0	1
OCT/NOV/DEC	0	0	0
JAN/FEB/MAR	0	0	0
APR/MAY/JUNE	1	0	0

Members			
RESULTS FOR 2023-2024			
QUARTER	MEMBER GROWTH NET GOAL	MEMBER GROWTH ACTUAL	DROPPED MEMBERS ACTUAL (including transfers)
JULY/AUG/SEPT	50	30	32
OCT/NOV/DEC	50	31	30
JAN/FEB/MAR	50	20	44
APR/MAY/JUNE	30	21	35

GOALS AND ACTUAL NEW CLUBS CUMULATIVE



GOALS AND ACTUAL MEMBERS CUMULATIVE



DROPPED CLUBS: 1

19 CLUBS OF 33 ADDED 1 OR MORE NEW MEMBERS

GENDER DISTRIBUTION

MALE 736 (61.95%)
FEMALE 452 (38.05%)

DROPPED MEMBERS

DECEASED	17
CLUB CANCELLED	0
OTHER	124
TOTAL	141

[CLICK HERE FOR CUMULATIVE MEMBERSHIP DATA](#)

TOTAL FAMILY UNIT MEMBERS	283
FAMILY MEMBERS PAYING HALF DUES	142